

**ProTec T1S 4+0**

**Class I • Class II • Type 1 • Type 2**



Location of Use: Main Distribution Boards  
 Network Systems: TN-S  
 Mode of Protection: L-PE, N-PE  
 IEC/EN Category: Class I+II / Type 1+2  
 Housing: Pluggable Design  
 Compliance: IEC 61643-11:2011  
 EN 61643-11:2012

**Technical Data**

**ProTec T1S-xxx-4+0(-R)**

**275**

**IEC Electrical**

Nominal AC Voltage (50/60Hz)	$U_o/U_n$	240V
Maximum Continuous Operating Voltage (AC)	$U_c$	275V
Nominal Discharge Current (8/20 $\mu$ s)	$I_n$	25 kA
Maximum Discharge Current (8/20 $\mu$ s)	$I_{max}$	65 kA
Impulse Discharge Current (10/350 $\mu$ s)	$I_{imp}$	25 kA
Specific Energy	W/R	156.2 kJ/ $\Omega$
Charge	Q	12.5 As
Voltage Protection Level	$U_p$	1500V
Response Time	$t_A$	< 100ns
Overcurrent Protection (max)		315 A gG
Short-Circuit Current Rating (AC)	$I_{SCCR}$	50 kA
Follow Current Interrupt Rating	$I_{fi}$	50 kA <sub>RMS</sub>
TOV Withstand 120min	$U_T$	442V
Number of Ports		1

**Mechanical & Environmental**

Operating Temperature Range	$T_a$	-40 °F to +185 °F [-40 °C to +85 °C]
Permissible Operating Humidity	RH	5%...95%
Altitude		6562 ft [2000m]
Terminal Screw Torque	$M_{max}$	39.9 lbf-in [4.5Nm]
Conductor Cross Section (max)		2 AWG (Solid, Stranded) / 4 AWG (Flexible) 35 mm <sup>2</sup> (Solid, Stranded) / 25 mm <sup>2</sup> (Flexible)
Mounting		35 mm DIN Rail, EN 60715
Degree of Protection		IP 20 (built-in)
Housing Material		Thermoplastic: Extinguishing Degree UL 94 V-0
Thermal Protection		Yes
Operating State / Fault Indication		Green Flag / Not Green Flag
Remote Contacts (RC)		Optional
RC Switching Capacity		AC: 250V/1A, 125V/1 A; DC: 48V/0.5A, 24V/0.5A, 12V/0.5 A
RC Conductor Cross Section (max)		16 AWG (Solid) / 1.5 mm <sup>2</sup> (Solid)

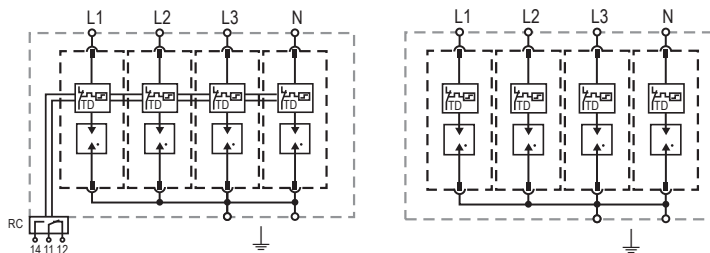
**Order Information**

Order Code	<b>275</b>
ProTec T1S-xxx-4+0	59.0744
ProTec T1S-xxx-4+0-R (with remote contacts)	59.0745
ProTec T1S-xxx-P (plug)	59.0384

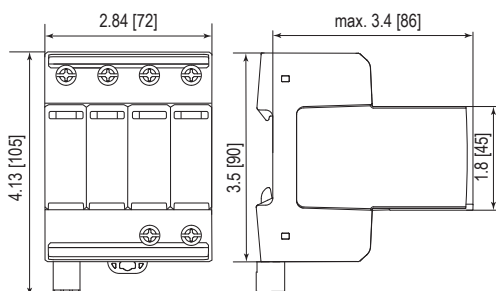
Internal Configuration

Legend

- L Line Conductor Terminal
- N Neutral Conductor Terminal
- PE/G Conductor Terminal
- RC Remote Contacts Terminal (Optional)
- TD Thermal Disconnect



Complete Unit

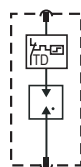


Dimensions & Packaging

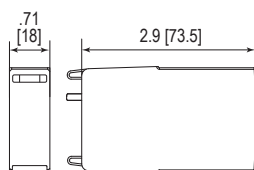
<b>ProTec T1S-xxx-4+0</b>	<b>275</b>
Single Unit Weight pounds [grams]	1.481 [672]
<b>ProTec T1S-xxx-4+0-R</b>	<b>275</b>
Single Unit Weight pounds [grams]	1.501 [681]
Single Unit DIN 43880 Dimension	4 TE / 2.84 [72]
Packaging Dimensions (HxWxL)	4.3 x 4.5 x 13.8" [109 x 115 x 352 mm]
Standard Order Quantity	4 Units

Plug Internal Configuration

ProTec T1S-xxx-P



Spare Plug



Dimensions & Packaging

<b>ProTec T1S-xxx-P</b>	<b>275</b>
Single Unit Weight pounds [grams]	.231 [105]
Single Unit DIN 43880 Dimension	1 TE / .71 [18]
Packaging Dimensions (HxWxL)	4.3 x 4.5 x 13.8" [109 x 115 x 352 mm]
Standard Order Quantity	28 Units

inches  
[mm]

Information contained in this document is subject to change at any time without notice.

