

DATA SHEET

Coaxial SPD for Analog Video Surveillance Systems

RayCox BNC Series**C1 • C2 • C3**

IEC/EN Category: C1/C2/C3
 Surge Discharge Ratings: I_n : 10 kA, I_{max} : 20 kA
 Voltages: 10, 24 VDC
 Max. Operating Voltage: 12, 24 VDC
 Frequency Range: 100 MHz
 Series Load Current: 100 mA
 Enclosure: In-line Installation
 Termination: BNC Connectors
 Housing: Shielded Enclosure
 Compliance: IEC/EN 61643-21

**Technical Data**

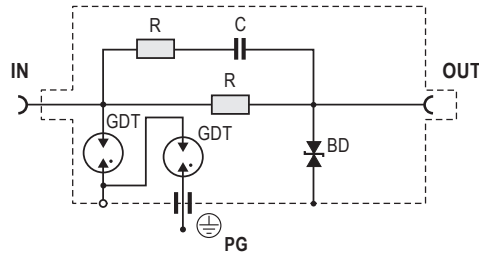
BNC		BNC 5	BNC 12
Electrical			
Nominal Operating Voltage (DC)	U_n	10V	24V
Maximum Continuous Operating Voltage (DC)	U_c	12V	28V
Rated Operating Current at 25°C	I_L		100 mA
C2 Nominal Discharge Current (8/20 μ s)	I_n		10 kA
Maximum Discharge Current (8/20 μ s)	I_{max}		20 kA
Residual Voltage at 5 kA (8/20 μ s)	(Wire-Shield) U_{res}	< 35V	< 65V
Rated Spark Overvoltage	(Wire-Shield)	13.5V – 16.5V	30V – 36V
	(Shield-Ground)	72V – 108V	72V – 108V
Response Time Overvoltage Protection	(Wire-Shield) t_A		< 10 ns
	(Shield-Ground)		< 100 ns
Insulation Resistance of Protection	(Wire-Shield) R_{iso}	$\geq 12 M\Omega$	$\geq 28 M\Omega$
	(Shield-Ground)		$\geq 1 G\Omega$
Serial Resistance per Path	R		9 – 11 Ω
Transverse Capacitance	(Wire-Shield) C		30 pF
	(Shield-Ground)		1 pF
Cut-off Frequency	f_G		100 MHz
Transmission Rate			16 Mbit/s
Mechanical			
Temperature Range		-40 °F to +176 °F [-40 °C to +80 °C]	
Connection		BNC Connector	
Degree of Protection IEC/EN 60529		IP 20 (built-in)	
Housing Material		Metal	
Order Information			
Order Code		BNC 5	BNC 12
BNC xx		7050.22	7050.13

RayCox BNC Series

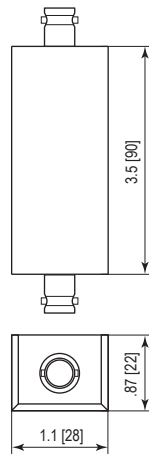
Internal Configuration

Legend

- BD Bi-directional TVS Diode
- C Capacitor
- GDT Gas Discharge Tube
- PG Protective Grounding
- R Resistor



Dimensions & Packaging



BNC	BNC 5	BNC 12
Dimensions		
Weight per Unit	2.04 oz [58g]	
Packaging Dimensions (Single Unit)	5.5 x 7.9" [140 x 200 mm]	

inches
[mm]

Information contained in this document is subject to change at any time without notice.

RoHS COMPLIANT  

Raycap

www.raycap.com

© 2020 Raycap All rights reserved.
G29-00-048 201120